



UNIVERSITY OF MALTA
Faculty of Health Sciences
Department of Radiography



ERASMUS Radiography Group
<http://www.erasmus-rad-group.org/>



Education and Culture DG

Lifelong Learning Programme

Web Information
for students visiting Malta

January – April 2012

DEPARTMENT OF RADIOGRAPHY

The Department of Radiography forms part of the Faculty of Health Sciences at the University of Malta. The Department of Radiography is situated within Mater Dei Hospital, Malta's main general and acute hospital, which is also ideally located very close to the main campus of the University of Malta.

The address of the Department of Radiography is as follows: -

*Department of Radiography
Faculty of Health Sciences
University of Malta
Mater Dei Hospital
Administration Building (Block A1)
Msida, MSD2090
MALTA*

Visiting ERASMUS students may receive post at the above address. Once registered with the University of Malta, ERASMUS students can access their own e-mail addresses via open access internet on University computers found at the FHS or at the main university campus. Wi-Fi access is also available.

ACCOMMODATION

Accommodation will be booked for you at Garden View Holiday Complex, Swieqi. The apartments are equipped with linen, cutlery, pots, etc. An iron and ironing board are also available in each apartment.

By the end of September, booking forms detailing the type of apartments available from January to April, the costs involved and the terms and conditions of the lease are usually sent out to ERASMUS students coming to Malta.

TRAVEL

One can walk from the accommodation to the University of Malta / Mater Dei Hospital. This usually takes about 25 minutes.

On the other hand, one can make use of public transport to get to the University of Malta / Mater Dei Hospital. The quickest route one can take is to walk to the Pembroke Park & Ride bus interexchange (5 minutes walk from accommodation) and get the Route X1 express bus to Mater Dei Hospital (approximately 8 minutes journey time). Kindly refer to the Arriva Malta website (www.arriva.com.mt) for latest information about routes and timetables.

One should also note that taxi services are also available. However, taxis are generally expensive (*tariff can vary between €20 to €35 per trip*) and should only be used in the event of an emergency.

ERASMUS COURSE PROGRAMME

The course programme for the ERASMUS students during the exchange programme is composed of the following study units:

Code	Unit Title	ECTS Credit Value	Level	T/P	Assessment Mode
CPH 3201	Pharmacology for Radiographers	2	3	T	Test
RAD 1062	Principles and Practice of imaging : Pharmacology Practice	4	1	T	PBL Presentation
RAD 3061	European Legislation on Medical Exposure and Physical Agents	2	2	T	Presentation
RAD 2060	Clinical Studies: General and Speciality Imaging	8	2	T	Clinical Assessment
MAL 0004	Introduzzjoni ghal-lingwa Maltija (kors applikat)	2	0	T	Test orali u test miktub
IHC 0101	Maltese Culture	2	0	T	Assignment

CREDIT SUMMARY	<i>Theoretical</i>	12 ECTS
	<i>Clinical</i>	8 ECTS
	Total	20 ECTS

TEACHING METHODS

Academic Teaching

Within the University, lectures, discussions and tutorials will be supported by group and individual assignments. Success in the programme relies on full participation in the assignments/tasks given.

Lectures sessions* can be held at the Faculty of Health Sciences, **or** at Mater Dei Hospital **or** on the Main University Campus. The length of the lecture day may vary. Free time is intended for course reading and individual study.

** The Language of instruction at the University of Malta is in English, and **students are expected to be fluent in the English language**. It is the student's and the home coordinator's responsibility to ensure that students are fluent in the English Language. No particular concessions are allowed to students whose level of English is lower than expected.*

Clinical Placement

Clinical placements will mainly take place at Mater Dei Hospital which is the main general and acute public hospital in Malta. Radiotherapy clinical placement will take place at Sir Paul Boffa Hospital, Malta's main Radiotherapy and Oncology Hospital.

Students are expected to perform **a minimum of 200 hours** in clinical placement. In order to achieve this goal, students can be assigned to either morning, afternoon or night duties, Mondays to Fridays.

Students will be required to keep a record of the clinical hours they have performed on attendance sheets that will be supplied by the clinical placement co-ordinator. All hours recorded in clinical placement must be accompanied by the signature of the radiographer who supervised the student during that placement.

Students spend approximately eight weeks in clinical placement. These placements include a variety of general and specialist areas, in the two main hospitals: -

1. **Mater Dei Hospital**, which includes the following areas: -

- General radiography
- Accident & Emergency Radiography
- Fluoroscopy (Contrast Studies)
- Dental radiography
- Theatre and Mobile Imaging
- Mammography
- Spiral Computed Tomography Scanning
- Magnetic Resonance Imaging
- Nuclear Medicine
- Angiography / Cardiac Catheterization Lab
- Ultrasound

2. **Sir Paul Boffa Hospital**, which includes: -

- Radiotherapy
- General radiography (diagnostic)

Students will be asked to indicate their preference for clinical placement during the first week of the exchange; however one should be aware that clinical placements are always dependant on availability and demand.

REGISTRATION FORMS & IMMUNISATION RECORD

Students are required to complete a number of registration forms prior to their arrival in Malta. Students are also required to **submit a copy of their immunisation record, which must include evidence of immunity to Hepatitis B** or absence of markers of infectivity.

Students are also required to undertake and submit result of nasal swab for MRSA. This is to be undertaken with a 30 day period before the commencement of the placement. Failure to submit the immunisation record and/or MRSA swab result may jeopardize one's chances of being able to perform duties in clinical placement.

In addition to the forms, students are also asked to send:

- An official letter from your university stating that they have been nominated to participate through the LLL Erasmus Mobility Programme
- The student's 'Learning Agreement' listing the study units to be performed in Malta and signed by the student and sending institution
- 6 passport size photos
- A copy of their passport or I.D. Card
- A copy of their European Health Insurance Card (EHIC)
- A copy of their travel insurance for the complete period of the exchange
 - *The insurance should cover items not covered by the EHIC, such as:*
 - *personal belongings, health services (particularly those not covered by the EHIC), evacuation, and repatriation*

UNIFORMS & PERSONAL NAME BADGES

All students are encouraged to bring their own uniform, personal name badges and radiographic markers for use during their clinical placement in Malta. If the student is not able to bring his/her own uniform, this can be provided by the Department of Radiography against a monetary deposit.

Personal name badges indicating that you are a radiography student should come in handy to obtain access to the staff canteen at the hospital.

RADIATION MONITORS

The Radiation Protection Unit at Mater Dei Hospital will issue a TLD radiation monitor badge for all students and this must be worn at all times while in clinical placement. Students are usually charged a nominal fee of approximately €15 each for this service.

QUESTIONS?

If you have any questions about the ERASMUS programme, feel free to contact any of the following members of staff by email: -

Dr. Paul Bezzina

 paul.bezzina@um.edu.mt

Mr. Jonathan Portelli

 jonathan.portelli@um.edu.mt

Mr. Frank Zarb

 francis.zarb@um.edu.mt

USEFUL INFORMATION ABOUT MALTA

Airport

Malta International Airport is situated at Gudja, served by bus number 8 to and from Valletta. Tel: 21249600.

Banks & Currency

Banks are normally open for business from 8.30am to 12.30pm, Mondays to Saturdays except on public holidays.



As from the 1st January 2008 Malta adopted the Euro as its currency.

Electricity

The electricity supply is 240volts, 50 hertz. Three-pin British Standard plugs are used but, if required, adapters are easy to obtain too.

Health

Visitors from EU member states should ensure they are in possession of their European Health Insurance Card (EHIC) when requiring medical care at one of the public hospitals or clinics. A medical insurance policy is to be presented when attending a private clinic.

Important Telephone Numbers

Emergency	112	Mater Dei Hospital	2545 0000
Ambulance	112	Malta International Airport	2124 9600
Fire Brigade	112		
Police	112		



Postal Services

Post Office branches are found in most towns and villages. Opening hours are from 7.30 – 12.30hrs from Monday to Saturday. Some villages have a sub-post office serviced by certain stationery shops.

The Valletta Post Office branch, situated at Castille Square, is open Monday to Friday 8.15 hrs - 15.45 hrs; Saturday: 8.15 hrs - 12.30 hrs.

Public Holidays

1 January - New Year's Day	15 August – Feast of Santa Maria
10 February - Feast of St. Paul Shipwreck	8 September – Victory Day
19 March - Feast of St. Joseph	21 September – Independence Day
31 March - Freedom Day	8 December – Feast of the Immaculate Conception
March/April - Good Friday	
1 May – Workers' Day	13 December – Republic Day
7 June – Sette Giugno Commemoration	25 December – Christmas Day
29 June – Feast of St Peter & St Paul	

Time Zone

Malta's time is set according to Central European Time (cet). Summer time starts on the last Sunday of March and ends on the last Sunday of October.

Eating & Drinking

Malta and Gozo offer a wide selection of quality restaurants to suit the budget conscious and the gourmand alike. In fish restaurants, the menu may vary according to season and the catch of the day. It is recommended to ask for fresh fish which may also be on display. To experience traditional Maltese home-cooking, try dining at the more popular family restaurants specialising in local fare.

You can also choose to compliment your meal with a typical Maltese beer, wine or liqueur.

Some typical Maltese dishes include:

Rabbit dishes: stewed or fried

Braġjoli: Beef Olives filled with a mash of spiced Maltese sausage and eggs

Timpana: macaroni pie

Lampuki: coryphene or dorado fish

Swordfish: with tomato, olive and caper sauce

A variety of home-made soups and pasta dishes are also quite popular. Other snack-like specialities include: -

Gbejniet: Goats cheese (fresh, dried, plain, peppered) usually served with Maltese water crackers

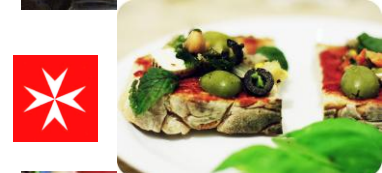
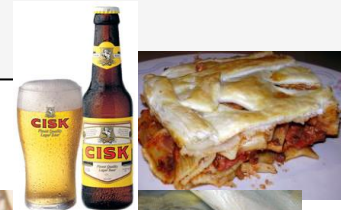
Pastizzi: Cheese or Pea pastry cakes

Bigilla: Bean & herb dip

Hobz biz-zejt: Maltese bread (ftira) with tomato paste spread, tuna, capers, olives and marinated vegetables

Qaghaq tal-ghasel: Honey rings

Qubbajd: Traditional nougat



Cost of Living

Food & Drink

Milk (1ltr)	€ 0.60	Beer (supermarket)	€ 0.80
Pepsi (50ml)	€ 0.55	Beer (bar/pub)	€ 1.80
Water (50ml)	€ 0.45	Coffee (cafeteria)	€ 1.50
Bread (loaf)	€ 0.50	Chocolate bar	€ 0.45
Sandwich	€ 1.75	Big Mac Menu	€ 5.15
Pizza / Pasta	€ 7.50	Fillet Steak	€ 20.00

Entertainment

Cinema	€ 6.75	DVD	€ 32.50
Bowling	€ 7.50	CD	€ 20.00



For more information about Malta go to <http://www.visitmalta.com>